



We Put Your Signs To Work – Not Your Staff!

SignWave™ eliminates endless printing of paper signage, placards, bulletin boards, menus, and room schedules, by providing the most up-to-date message possible where it matters the most. SignWave digital door cards and signs create communication solutions for healthcare, education, convention, and corporate centers that utilize flexible meeting spaces which may be rented, occupied, or otherwise repurposed on a regular basis. The most common benefit of SignWave is to place vital scheduling information anywhere it needs to be updated often—*automatically*—which increases workplace efficiencies by reducing time-consuming micro-tasking of personnel who can now be reassigned to less redundant activities.

SignWave makes it possible to attain many *communication* benefits by automating data retrieval where it can do the most good. For example, SignWave automatically updates via the cloud-based SignWave Widget. The Widget reliably and securely retrieves and formats information from popular property management and event data software applications. This provides a “set it and forget it” implementation that makes day-to-day operation hands free. The SignWave Widget, powered by our leading BREEZE Digital Signage™ system, also supports digital reader boards, menu boards, and interactive signage, all of which enhance customer service and meet the expectations of today’s digitally-empowered guests.

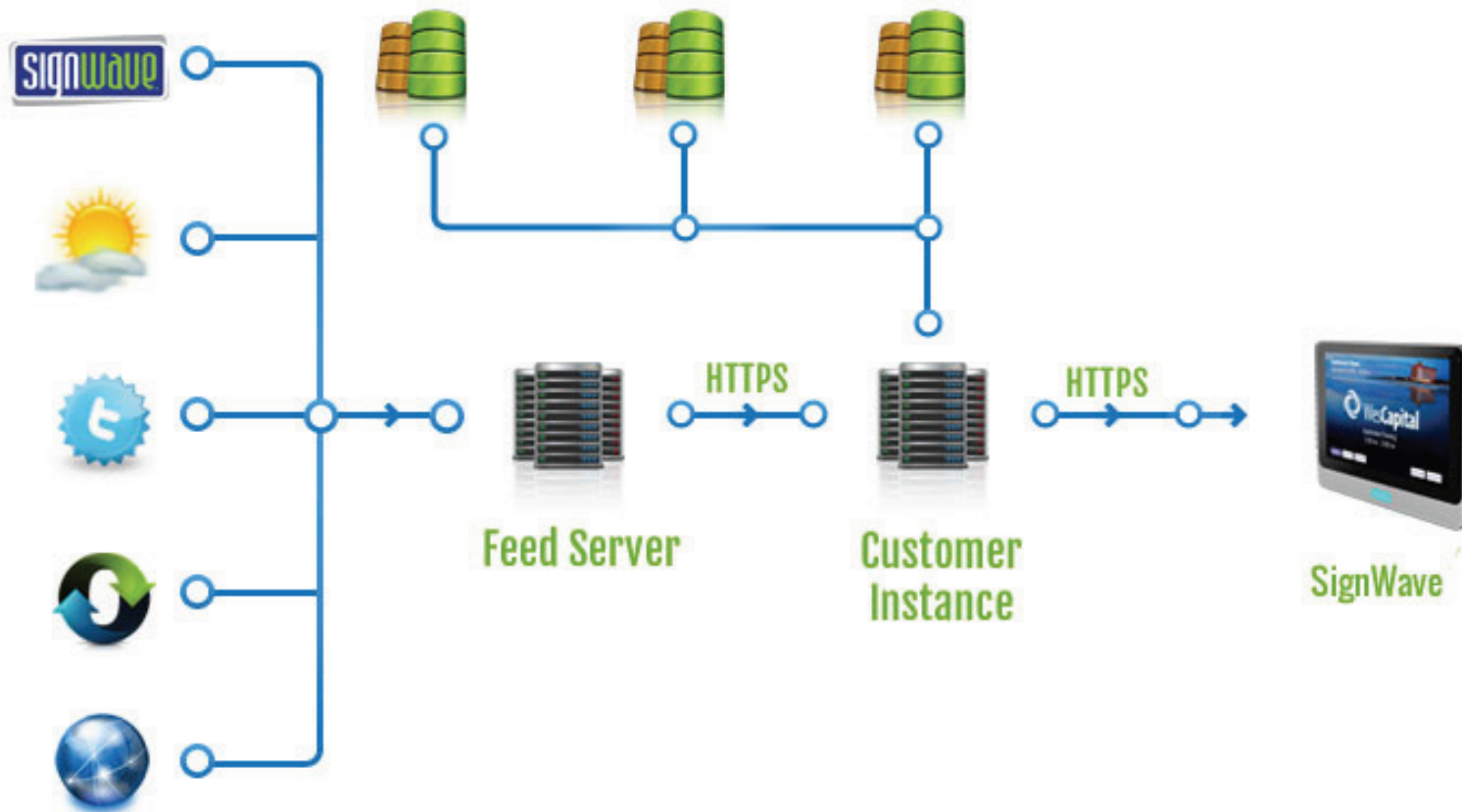
SignWave integrates with leading database, calendar, event, and property management platforms





BREEZE WIDGETS

Breeze 2.0 Cloud Network Using SignWave Widget



*SIGNWAVE WIDGET POWERED BY...



All Communication in the Breeze Architecture -- whether it is the Feed Server to the Breeze Server Instance or the Breeze Server Instance to individual players -- occurs over HTTPS. HTTPS is HTTP connection secured with SSL/TLS.



PART # BRZ2-10

SURFACE OR
RECESSION MOUNT

KEY FEATURES

10"



Android Operating System



**Reliable & Secure Data Retrieval
via Breeze Widget**



**VESA Mount to Glass or Wall or
use Recess Mount or Counter Top
Stand Options**



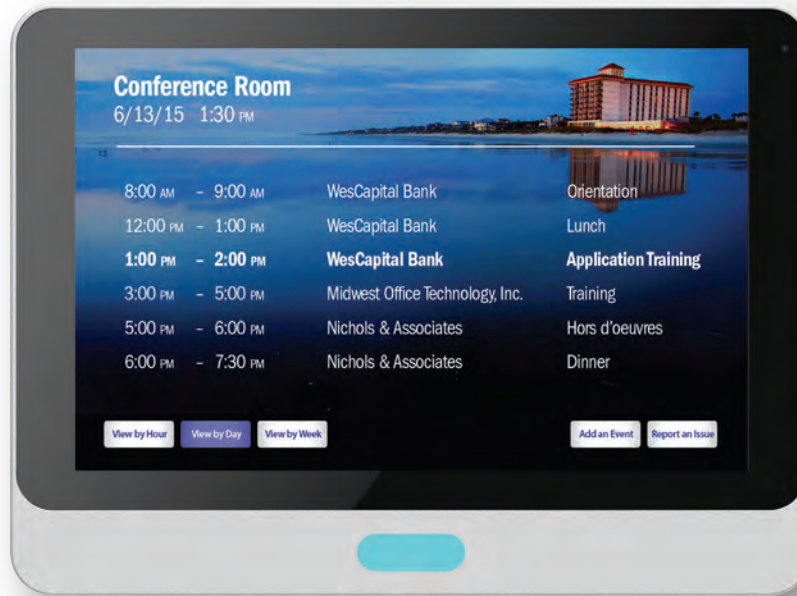
Capacitive Touch Screen



**Power-over-Ethernet PoE+
& WiFi 802.11 b/g/n**



Slim Chassis with 1" depth



LED Light Bar



Near Field Communications (NFC)



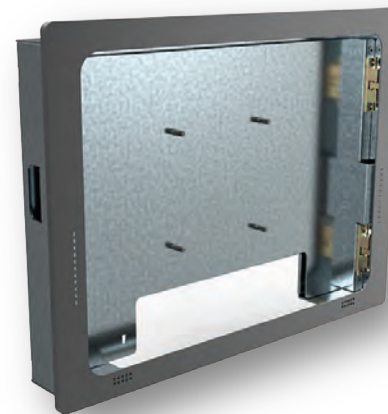
BLE Beacon Equipped



RTSP & HTTP Streaming



Optional Recess Mount Container
BRZ2-120



Optional Counter Top Stand
BRZ2-110



Call 800-331-2019 – www.KeywestTechnology.com

Copyright © 2017 Keywest Technology, Inc. All Rights Reserved

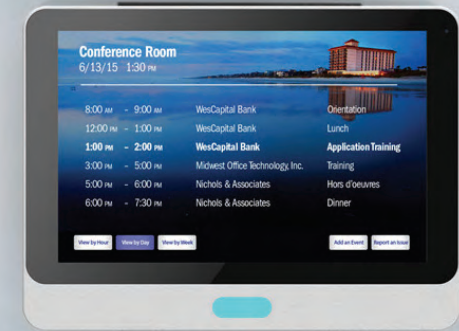
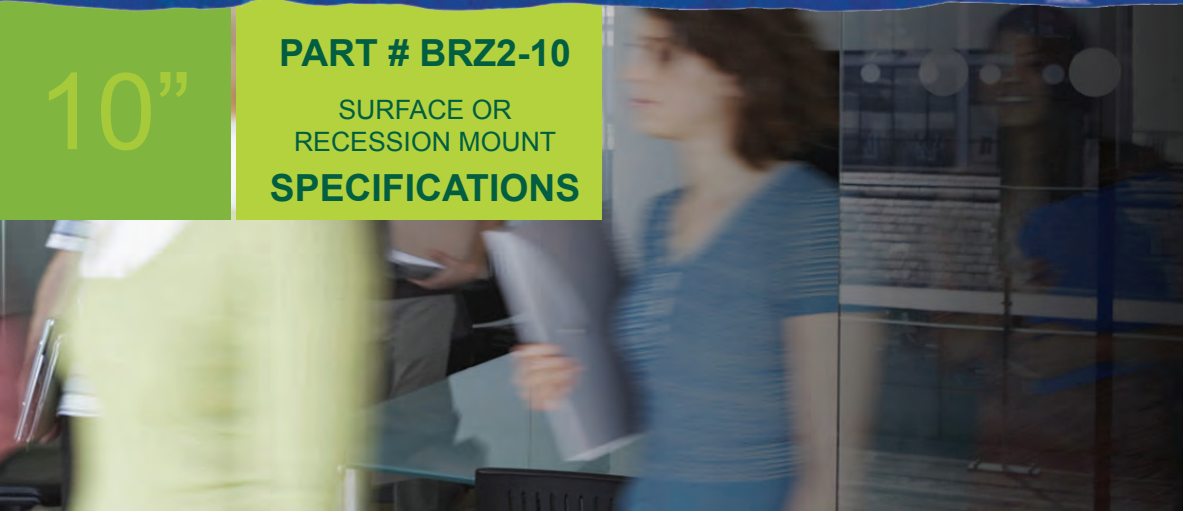
Breeze-2 SignWave # 090617



10"

PART # BRZ2-10

SURFACE OR
RECESSION MOUNT
SPECIFICATIONS



DISPLAY PART # BRZ2-10

Size	10.1"
Resolution	1280 x 800
Brightness	300 nits
Contrast Ratio	1000:1
Aspect Ratio	16:10
Touch	Yes
Viewing Angle	178 / 178 (H/V)

FEATURES

OS	Android 5.1
CPU	ARM quad-core 1.6GHz
Memory	2GB DDR3
Storage	8GB eMMC
Video Decoder	H.264/MPEG-4
Image Codecs	JPEG/PNG up to 1920
Orientation	Landscape/Portrait
Audio Codecs	MP3
NFC module	Yes
PoE+	Yes
Beacon (BLE)	Yes

IO INTERFACE

Ethernet	1x RJ45 (10M/100M)
WLAN	802.11 b/g/n
USB	2x USB2.0
USB Micro	1x USB (ADB)
Analog Stereo	1x 3.5mm stereo out
Expansion Slot	1x Micro SDHC
Speaker	2W x2

MECHANICAL & ENVIRONMENT

Dimension (WxDxH)	10.28"x1.1"x7.61" (261.1x27x193.3mm)
Weight	1.56 lbs. (710g)
Mounting	Glass / Surface / Recessed
Housing	Plastic (black silver white)
Operating Temp:	32~122°F
Storage Temperature:	-4~140°F
Humidity:	10-85% (non-condensing)
Power	DC 12V, 1.5 ^a
Certification	CE/FCC/RoHS
Warranty	1yr